

Rainbow Montessori School ^{©™}

The Rainbow Montessori School nurseries were founded by Linda Madden in 1982 to teach children from the ages of 2 to 5 years old.



Photo: Cairo Sealey

Head Office

125 Salusbury Road, Queens Park NW6 6RG

Tel: (020) 7328 8986

www.rainbowmontessori.co.uk

rms@rainbowmontessori.co.uk

Rainbow Montessori Nurseries are fully accredited by Montessori Education (UK) Ltd, the UK regulatory body and inspected by Ofsted.



Rainbow Montessori School Ltd. trading as Rainbow Montessori School

THE RAINBOW MONTESSORI PHILOSOPHY

We aim to bring out the best in each child-to fulfil their potential both in academic and human terms. We do this through the Montessori teaching method, which has proved highly successful all over the world. The Montessori Method is both a philosophy of child development and a practical method of achieving it.

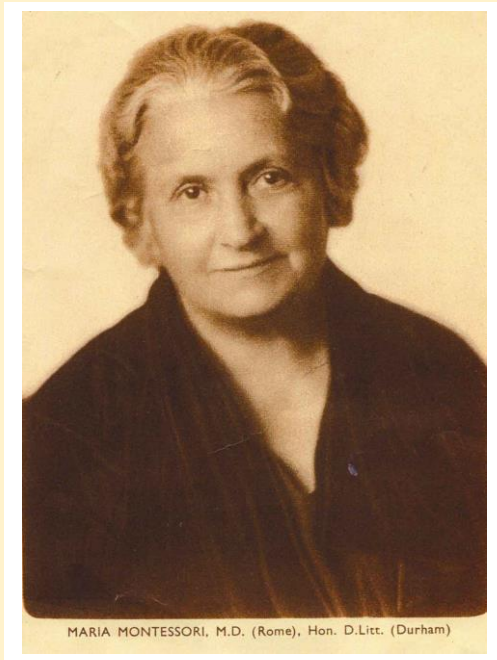
Maria Montessori believed that all children naturally want to learn about the world in which they live. This desire can be lost if they are taught in a manner where they are not engaged and involved. Teaching all children the same work at the same time may suit a teacher's timetable but takes no account of the individual child and their unique stage of development.

An alternative approach, The Montessori Method, starts with the teachers following the child. By assessing the child as an individual, teaching can be tailored to their needs and the child's inner wonder and curiosity can be harnessed into self-development. The child learns about the world around them rather than simply being taught about it.

Individual education for each child is achieved by a carefully prepared school environment, with specially prepared materials which 'self-correct' a child as they begin to develop their understanding of touch, sense, feel, the natural world, mathematics, art and indeed all the subjects which make up our adult understanding of the world.

Maria Montessori believed that children have an inner drive that inspires them to achieve their goals. Rainbow seeks to inspire them to learn with wonder and confidence. The growth of our school bears witness to the viability and brilliance of this approach to education. Maria Montessori believed that children carry within themselves the person they will become and our goal is to help them reach their full potential by giving them the confidence to become the best they can be.





DR. MARIA MONTESSORI (1870-1952)

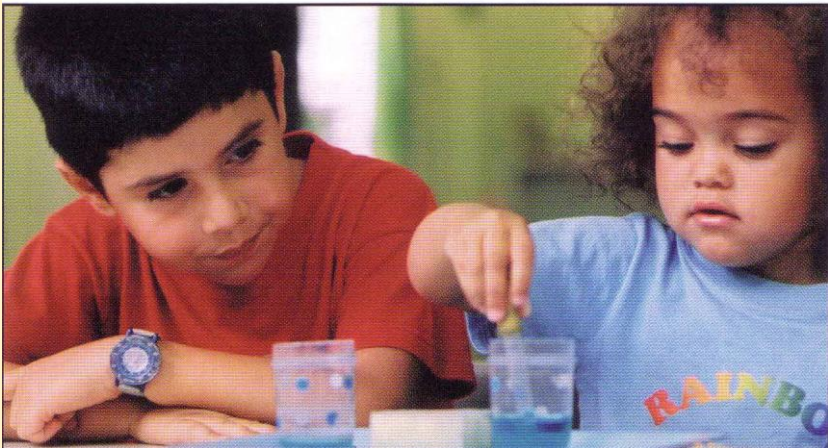
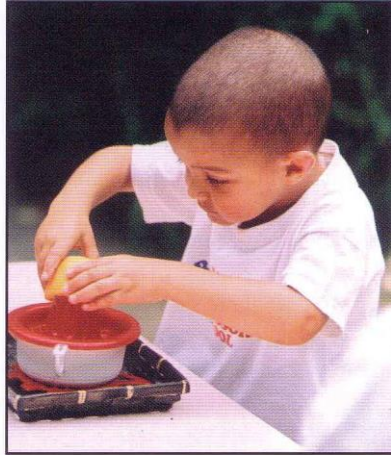
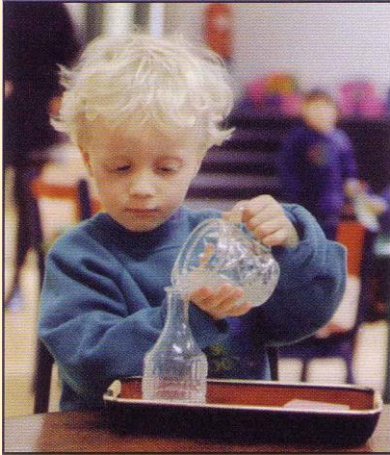
Dr. Maria Montessori through scientific study, realised that the first six years of a child's life were the most important in terms of developing their potential to the fullest. Every child wants to learn, so there is no need to force them. The Montessori approach allows each child to develop at their own pace because each child is different. In the classroom, they have complete freedom to learn without disruption. In this way, the child learns to discipline themselves without too much adult interference. The result is that they gain tremendous independence and confidence.

Dr Montessori believed that independence and confidence was paramount to a child's early learning education. Acting mainly as a guide, the teacher introduces the child to the love of work through a methodical process, suitable to his/her capabilities.

The equipment Dr Montessori designed, and we still study today, was especially geared to sharpen and develop the child's sensory awareness. This enables the child to develop concentration and inner discipline whilst gaining knowledge in the areas of language, maths, geography, science, creative arts and history

THE RAINBOW CLASSROOM

The school aims to create a happy and calm atmosphere, with importance attached to the social and personal development of the child as well as academic progress. Within the class, children are mixed between all age groups. Mixed age groups afford the child the opportunity to help and be helped by other children and take part as both the youngest and oldest member.



Photos: Cairo Sealey

INDEPENDENCE, CONFIDENCE AND CONCENTRATION

When a child first enters the classroom, it is essential that they can function in their own environment. Independence is the most natural desire of a small child, so the first part of their education is to learn to be independent. Before learning any academic area, the child must build up his/her confidence and concentration. The focus of these important areas usually takes the first year of schooling. This is preparation for the next stages.

Two Montessori subjects that are fundamental in building independence, confidence and concentration, are known as **Practical Life** and **Sensorial**. These are foundation subjects whereby the child learns to become independent, concentrate and acquire practical skills. Without this preparation and groundwork, numbers and letters become a pointless operation.

Practical Life

Children are encouraged to develop their independence, confidence and concentration through every day tasks such as pouring, polishing and sweeping. Materials such as the dressing frames develop their practical skills in co-ordination, thereby helping them achieve what they want to do independently. This means that at home they can dress unaided and even pour out their own apple juice!

Sensorial

Thanks to Dr. Montessori's findings we now know that our senses develop most significantly from the day we are born until the age of six. We need to refine our senses during this development as much as possible. Materials such as the famous pink tower, the colour box, touch boards, sound boxes and smelling bottles help refine the child's senses. All these exercises help prepare him/her for further learning in other areas such as language and numeracy.



EARLY LEARNING GOALS

Rainbow Montessori School successfully encompasses the Early Learning Goals established by the government. Schools that comply by this requirement can obtain funding for 3 and 4 year olds.

The government's Early Learning Goals are set out below and have been adapted to the Montessori Method.

Personal, Social and Emotional Development

Grace and courtesy lessons in addition to practical life and sensorial exercises help the child to care for him/herself and others. Teachers show the child how to interact socially through role-plays, lessons, examples and role-models. Practical life skills and sensorial refinement are achieved through fun and self-correcting materials.

Knowledge and Understanding of the World

Through the use of our cultural materials, the children gain a wide range of knowledge of their world. Our puzzle map enables them to solidly see the seven continents of the world, which is then brought to life through projects, visitors, celebration, costumes, stories and music. Even our dressing-up clothes are costumes from around the world, encouraging this knowledge and understanding.

Physical development

Physical development is gained through both indoor and outdoor pursuits. Children develop body co-ordination as well as moving gracefully through the exercise of "walking on the line". These are graded from simple to complex, which help the child refine his co-ordination skills. Concentration and co-ordination skills are achieved through ball games, drama, gym and dance.

Creative development

Creative development is nurtured through art, poetry, storytelling, drama, dance and movement. Children have an opportunity to explore any or all of these areas daily. Because we know that creativity is spontaneous, the art easel and similar tools provide an instant stimulation. Children are encouraged through our dedicated art opportunities to be as creative as they desire.

COMMUNICATION, LANGUAGE AND LITERACY

Children learn to read at Rainbow only once they are fully prepared. This preparation is done through sensorial tools as well as memory and listening games. As in life, listening skills are the key to our development and therefore to the child's preparation at Rainbow. Starting with phonetic sounds taught sensorially using the sandpaper letters, the child moves on to phonetic blends and phonograms. This makes for a strong phonetic reading system. Testimony to the Montessori Method of communication, language and literacy is that our children have some of the finest writing when entering their secondary education.

Mathematics

The concept of maths has already begun by experimenting with dimensions in the sensorial exercises. Again preparation is the key – children are taught numbers only after they are thoroughly prepared. This preparation is done through the use of concrete materials, which can then develop the foundation for numeracy. They understand first the concept and then the abstract of mathematics



Photos: Cairo Sealey

Curriculum

We cover a wide range of subjects which include: -

- Practical life
- Sensorial Education
- Literary Skills
- Mathematics
- Nature
- History
- Geography
- Dance
- Drama and Movement
- Art
- Craft work
- Singing and music
- Science
- French
- ICT

There are many opportunities to learn all kinds of instruments when the children join the Junior School.

SCHOOL UNIFORM

Rainbow Montessori's school uniform is colourful and practical. Children are required to wear full school uniform daily and all items must be clearly named. To comply with our health and safety policy, winter and summer hats are required. Full details of our uniform requirements can be viewed on our website www.rainbowmontessori.co.uk

School uniform is available from:

"The Outfitters",

23, High Street, Harrow On The Hill, Middlesex. HA1 3HT

www.theschoolspecialists.co.uk



Photo: Catherine Stanford

RAINBOW MONTESSORI NURSERIES ARE FULLY ACCREDITED BY MONTESSORI EDUCATION UK REGULATORY BODY ME(UK) AND ENDORSEMENT BY OFSTED

Rainbow Montessori Nurseries have been inspected by Her Majesty's Inspectors (H.M.I.) and have been judged as providing an excellent and nurturing educational environment. The school's curriculum was described as both broad and balanced and a number of areas were singled out for the highest praise:

- the standard of teaching
- the children's response to teachers
- the preparation of lessons

POLICIES

There is a handbook of school policies available which must be read and understood as this forms part of our terms.

- School history
- Philosophy of the school
- Special Educational Needs
- Punctuality
- Race and Culture
- Communication
- Parental Participation
- Food Management
- Health and Safety
- Sickness and Medication
- Head Lice
- Communication
- English as an Additional Language
- Teachers
- Disability Discrimination
- The Arts
- Television
- Sporting Aims
- Entry to the Junior School
- Uniform
- Behaviour /Bullying/Sanctions
- Accident Procedure
- Exclusion for Illness
- Child Protection
- Security
- Complaints Procedure
(inc. any registered complaints)

Policies are available via our website.

FRIENDS OF RAINBOW



You play a vital role in your child's education and we try to maintain a very open communication with you. Each term you are invited to observe your child at work as well as have access to the school's library of Montessori books and magazines. In 1994 the parents formed a parent/teacher association charity known as Friends of Rainbow (F.O.R.). As a parent you are automatically a member and are encouraged to be involved in having fun with us whilst supporting your child's school. F.O.R. organises social events for children and parents and raises money for the school and other charities.

Each school has a parent representative to help liaise and make you feel welcome.

The school contributes regularly to charities such as The Red Cross, Shelter, Great Ormond Street Hospital, Marie Curie and Macmillan Cancer Support. A Montessori School was established in Paraguay in October 1998, by Linda Madden.

SUGGESTED READING

(all available from the school library)

- Montessori, Maria.** (1998) The Discovery of Child.
Clio Press Ltd
- Hainstock, Elizabeth G.** (1968) Teaching Montessori in the Home
New American Library, New York.
- Lillard, Paula Polk** (1972) Montessori – A Modern Approach,
Schocken Books, New York



Photo: Cairo Sealey

Founding Principal: Linda Madden B.A. Rg. N.I. Mont. Dip. Adv.

Linda Madden trained under Dr. Montessori's own students Margaret Homfray and Pheobe Child at their Montessori St. Nicholas Centre. Having qualified in 1976 and after six years teaching 2½ – 12 year olds, Linda set up Rainbow Montessori School. She later gained a distinction in her degree of Early Childhood from the University of North London. Linda became a worldwide tutor and examiner for Montessori Centre International (formerly St. Nicholas) in 1979 and lectured in America, Canada, Germany, Ireland, South Africa in addition to conferences in Malaysia and Sweden. Linda also set up a sister school in Paraguay for underprivileged children. Alongside her post as Montessori Education UK (MEUK), she has also been a Registered Nursery Inspector for Ofsted.

ADMISSION STATEMENT

Rainbow Montessori School is committed to safeguarding and promoting the welfare of young people and expects all staff and volunteers to share this commitment.

Rainbow Montessori School welcomes parents and children from any race, creed, religion, or ethnic origin. We do not discriminate on the basis of disability or marital status in either our admissions or educational policy.

We welcome children and adults with disabilities as part of our community. Where the children have English as an additional language, the class teacher will work closely with the special educational needs co-ordinator and the parents to support their particular needs.

The school aims to create a happy and calm atmosphere, with importance attached to the social and personal development of the child as well as academic progress. Children with educational needs have always been welcome at Rainbow. A child entering the school with early years action plus/school action plus may be required to have an assistant provided by the parent.

Rainbow Montessori School is non-denominational and committed to equal opportunities and introduces the children to a wide variety of cultures and festivals.



FEES AND TERMS & CONDITIONS

There are three terms of school per year. Each term is between 10 -12 weeks long. Exact dates are displayed on the school notice board and on www.rainbowmontessori.co.uk.

Fees are paid on a termly basis before the start of each term. Payment not received by due date advised in our invoice will result in Rainbow Montessori School reserving the right to refuse your child entry into the nursery until full fees have been received. Late fees will be applied to payments not received on time and returned cheques will be charged per incident.

Rainbow Montessori School has set fees for mornings, afternoons and full days – if additional sessions are required, they are added onto the set fee price. Rainbow Montessori School does not provide refunds/credits/additional days in lieu of absence/sickness/illness/bank holidays or inset days. Also, in the event that our Nurseries are compelled to close in reasonable circumstances beyond our control, we are unable to refund fees.

Fees are subject to a yearly review. Please visit our website for up to date fees and terms and conditions.

Payment Method

BACS

Sort Code: 20-36-16 Account No: 73267482 Ref: Child's Name

ENTRY PROCEDURE

Please contact the Head Office 0207 328 8986 to arrange a visit prior to making an application to join the Nurseries. Children are accepted from 2 years old.

11. I/we agree to pay the sum of £360.00 to be held by the Rainbow Montessori School (RMS). The £360.00 consists of a £60.00 non-refundable registration fee and a £300.00 deposit. The said sum of £300.00 will be deducted from my/our child's final term's fees subject to the following:

1.1 The said sum of £300.00 will be repaid to me/us in its entirety unless I/we have failed to give RMS one term's written notice before removing my/our child from the school.

1.2 If I/we fail to give one term's written notice, I/we understand that I/we will be liable to pay one term's fees in lieu of notice and that the said sum of £300.00 will be retained by RMS towards payment of such fees.

2. Any offer of a place is based on and subject to full disclosure by you of all information required on the Registration Form. Any change in the information supplied must be notified in writing to RMS prior to the place being taken up.

3. This agreement is subject to acceptance of and compliance with our School Policies as stated in our Parent Handbook, available on our website. Where a breach of our policies results in the withdrawal of a place, the school will not be held liable including for any fees or costs arising.

4. No verbal indication to or from any member of staff shall constitute a legal agreement between the school and yourselves.

5. Any amendment to terms and conditions above may only be authorised in writing by the Director. Your acceptance of the foregoing conditions constitutes a legal agreement between RMS and yourselves. The terms and conditions above constitutes a legal agreement between Rainbow Montessori School and yourselves both individually and severally

NOTICE OF WITHDRAWAL

If you wish to withdraw your child from RMS, a full term's notice **in writing** is required by the first day of the child's last term or a term's fees in lieu will be required as per the signed Registration Agreement.

NURSERY LOCATIONS: (Age 2 to 5 years)

WEST HAMPSTEAD RAINBOW MONTESSORI

St. James' Church Hall, Sherriff Road, West Hampstead, London, NW6 2AP

QUEENS PARK RAINBOW MONTESSORI

St. Anne's & St. Andrew's Church Hall, 125 Salusbury Road, London, NW6 6RG

NURSERY OPENING TIMES

WEST HAMPSTEAD RAINBOW MONTESSORI

STANDARD HOURS

Morning Session 08.30am - 12.15pm

Afternoon Session 12.00pm - 3.15pm

Full Day Session 08.30am - 3.15pm



QUEENS PARK RAINBOW MONTESSORI

EXTENDED HOURS

08.00am – 08.30am Monday - Friday

03.15pm – 4.00pm Monday - Thursday

STANDARD HOURS

Morning Session 08.30am - 12.15pm

Afternoon Session 12.00pm - 3.15pm

Full Day Session 08.30am - 3.15pm